

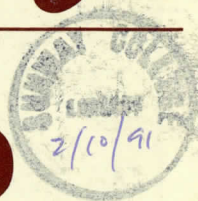


# SungeiWay

JANUARY/ MARCH 1988

PP 8/6/86

## FORGING AHEAD CONFIDENTLY



1987 has been a difficult year for the Group. We were beset with many problems, most of which were brought about by circumstances beyond our control. Reacting positively to these challenges, we have been able to develop new opportunities and lay the groundwork for the future growth of the Group.

1988, the year of the Dragon, is according to Chinese beliefs, a very auspicious year. My personal belief, judging from the many indicators, is that the worst is over. The Malaysian economy should continue to gather steam and grow with vigour through 1988. Primary commodity prices have been rising and the more stable political situation should bring back investor confidence.

The effect of the economic upturn will be positive for many of our subsidiaries. Tin mining will begin again and the whole construction industry will slowly move, affecting our building-related subsidiaries. I am confident that our traditional businesses - related to construction and building - will see a turnaround in gross turnover and profitability.

Bandar Sunway was recently launched and the response from the public to our Phase 1 medium-cost houses has been beyond expectations. Other phases will follow and, if our marketing strategy incorporates the element that the Malaysian house buyer is far more hard-headed and demanding than in the years before, we will be able to register vigorous sales.

In addition, the Ideas Competition to generate an optimum conceptual plan for the lakeside development in Bandar Sunway to make it truly the epitome of Resort Living within the City has recently been launched. I have emphasised to the Property Division that the SungeiWay Group's first large-scale housing, commercial and recreational development should set our corporate mark in the market.

Our educational venture - after making a promising start - continues to take wing. With persistence, we have managed to secure a twinning link with two prestigious Australian universities - the University of Western Australia and Monash - thus making a total of five institutions of higher learning to which Sunway College is linked and an educational offering of no less than 11 degree programmes in 1988. In addition, the Tertiary Entrance Examination (TEE) will be offered allowing our students to take the Western Australian Year 12 examination at Sunway College. This qualification allows entry not only to all Australian tertiary institutions but a large majority of UK, US, Canadian and New Zealand universities. We are, however, not resting on our laurels as we are busy exploring other links with universities worldwide.

One venture whose growth has been strong but without fanfare is the Computer Services Division. This Division has built upon its software development capability and is busy launching itself into educational back-up services in conjunction with IBM.

Staff strength has grown rapidly in anticipation of a diversification of our product mix.

Sungei Way Construction has been aggressively looking for jobs outside the Group and has been very successful in its tenders. In addition, it, together with Sungei Way Enterprise, will be expanding its technical staff strength to serve as in-house contractors for Bandar Sunway.

In the last two years, I would like to believe that the SungeiWay Group has cast off much fat and developed hardy sinews. For this to have been achieved, I am conscious of your deep loyalty to the Group in the face of adverse business conditions. I am confident that the Year of the Dragon will allow me the opportunity and the resources to reward you for your loyalty and steadfastness.

With the type and quality of the human resources that the SungeiWay Group has been fortunate to have, I am planning a series of measures to ensure that manpower and career development will go hand-in-hand with our business expansion and profitability. Our staff, productive as they are, can, through a careful manpower training programme, not only enhance their productivity and efficiency, but strengthen their motivation and morale. With your commitment, coupled with the entrepreneurial dynamism inherent in the Group, I am optimistic 1988 will indeed be a bright year for all of us.

Jeffrey Cheah

**BEST WISHES FROM THE  
MANAGEMENT FOR A HAPPY  
AND PROSPEROUS 1988!**





# EDITORIAL

With this bumper issue, our BERITA SUNGEI WAY re-appears after a lapse of about one year. The Editorial Committee (consisting of diverse personalities co-opted by friendly persuasion) will work hard to ensure the regular appearance of future issues.

A special 'thank you' is due to all of you who allowed yourselves to be persuaded to exhibit your flair for writing and expression. With such cooperation from you, we are confident that our plan to produce the BERITA every four months will be realized.

We will be very glad to hear from all of you on any, yes any, (publishable) topic that you wish to bring up. So, put on your thinking caps, place a pen in your hand and show us what you can contribute to the Berita SungeiWay.

The Berita is an important channel of communications among staff in our various subsidiaries. For this communication process to be meaningful, the Editorial Committee appeals to all of you to contribute anything you fancy from jokes to proposals on how to improve communications in the SungeiWay Group.

## EDITORIAL

DR L J FREDERICKS  
MOK SEW WAH  
MUSHTAQ HUSSIN  
LIEW SUI KEEN  
KHOO GAIK BEE  
CHRISTINA WENDY LEE  
WAN ABDUL RAHMAN  
CONNIE CHAN

## THE MOST PROMINENT SIGNBOARD ON THE FEDERAL HIGHWAY

The signboard atop the Highway Centre, measuring 20' x 20' is, without contention, one of the most prominent and strategically located advertisements in Petaling Jaya. Contrasted on a plain white background, the Group's brown and beige logo and name are proudly displayed. The sign is within eyesight for over a kilometre each way from the Federal Highway before you reach the Highway Centre ..... looking from the flyover over the Jalan 225 intersection towards Klang and from Malaya Acid Works in the direction of Kuala Lumpur.

It's lofty position, size simplicity command your attention. It is impossible to miss the imposing presence of the Sungei Way Group. Especially as night approaches, the illuminated signboard becomes even more prominent. To many observers, this signboard will be their first encounter with Sungei Way and becomes a natural topic of curiosity. Like Menara MPPJ and PJ Hilton, this signboard has become a landmark and has certainly and firmly put Sungei Way on the PJ map.

SHARON WOO



Standing tall and proud

## SUNGEI WAY QUARRY INDUSTRIES SDN BHD (SWQI) MOVES SOUTH

In its plan to acquire strategically located quarries throughout the country, SWQI has moved south to acquire an existing quarry in Kulai (located 30.5 km from Johore Bahru) through the purchase of 70% shareholding in Juarasama Sdn Bhd on 1st November 1987.

The quarry has been operating for some fifteen years and it has been involved in the development of:-

- i) Kulai Town
- ii) Johore - Singapore Causeway
- iii) Senai Airport
- iv) Bandar Tenggara
- v) P.V.B. Water-Treatment Plant

Mr. Loh Thean Loy now takes charge of the quarry as Senior Manager, with Mr. Ching Piak Kow as Manager and Mr. Ting Siew Hock (formerly from S.W. Leasing) as Sales Manager, together with nineteen other staff.

The present capacity of the quarry is about 10,000 tonnes per month. However, we are presently upgrading the crushing plant, and the production capacity is expected to increase to about 30,000 tonnes per month in early 1988. We possess two pre-mix plants at our quarry site in Sungei Way and we are currently dismantling the smaller Tanaka pre-mix plant to be reinstalled in our Kulai quarry. The premix plant is expected to be operational by January 1988.

Our granite quarry in Kulai is strategically located within the vicinity of major construction projects. It is also well poised to supply quarry materials and pre-mix for the North-South Highway Highway project as well as the surrounding developments in Johore.

## KEYS TO SUCCESS

- If my mind can conceive it, and my heart can believe it, I know I can achieve it.  
(Rev. Jesse Jackson)
- The biggest thing College prepares young people for is the knowledge of what it's like to be broken.  
(Jim Fiebig, United Feature Syndicate)
- People are always blaming their circumstances for what they are. I do not believe in circumstances. The people who get on in this world are the people who get up and look for the circumstances they want, and if they cannot find them, make them.  
(Bernard Shaw)
- Communists versus capitalists:  
The communists, seeing the rich man and his fine home, says, "No man should have so much". The capitalist, seeing the same thing, says, "All men should have as much".  
(Pelps Adams)

SUCCESS = (WHY + ATTITUDE + HOW) x ACTION

MANAGEMENT LECTURER



## OUR LINK WITH AUSTRALIA

As a first-step in its plans to expand beyond the Malaysia-Singapore region, the SungeiWay Group has established a company in Australia.

Sunway Corporation Proprietary Limited was recently incorporated in the state of Western Australia. Mr K Y Chin who was PA to the Group Managing Director, has been appointed its General Manager, based in Perth. Mr Chin will be responsible for investigating opportunities for the Group down under.

We wish him and Sunway Corporation Proprietary Limited every success.



## OUR STATEMENT OF CORPORATE PURPOSE

Our Group Managing Director, Mr Jeffrey Cheah, first mooted the idea of a Statement of Corporate Purpose for the Group more than a year ago. After numerous discussions and debates on its form and content, an official statement has now been finalised and adopted. This marks an important milestone in the Group's progress towards maturity in its management outlook.

The Statement of Corporate Purpose (or variously called Statement of Corporate Philosophy, Statement of Corporate Objectives, or Statement of Corporate Mission in other companies) is the embodiment of the Group's beliefs, values and aspirations. It defines and justifies our existence not as a business entity engaged merely in the pursuit of profits but one which recognises its obligations to the environment in which it operates as well as its moral influence on its employees.

Our Statement of Corporate Purpose

will provide a common direction for our people and will consequently bring about greater cohesion in our efforts. In difficult times, the clarity of our purpose will help to give us the conviction to make the right decisions. A rational and noble set of objectives is, therefore, essential to the long-term survival of the Group.

Many of the world's most successful organizations have clearly defined philosophies and they adhere to them with a devotion that borders on religious zeal. We must do likewise and not view ours as a slogan or a public relations statement.

Understandably, there are still deficiencies in the Group's operations. But they should not discourage us. Instead, we should act positively in the spirit of our Statement to create an environment where commitment to excellence is not a catch phrase but a characteristic of our daily actions.

SU THAI PING

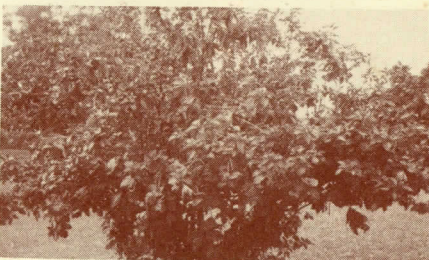
## Beauty of a different kind



A beautiful sight



For Sales - beautiful and healthy plants.



Our garden of beauty

With the primary objective of creating an ideal landscaped township for Bandar Sunway, the SungeiWay Group established its own nursery, named Sunway Nursery & Landscaping Sdn Bhd (SWNL) recently.

Presently, SWNL occupies a 10-acre plot of land in Section 13, Subang Jaya, and provides service such as:-

- i) Rental of potted plants
- ii) Sale and supply of ground cover, shrubs and trees
- iii) Design and construction of landscape for homes and properties
- iv) Maintenance of existing landscape
- v) Free advisory services

So, if you are wondering where to obtain healthy, beautiful and reasonably priced greeneries for your home or properties, call Mathi at SWNL (Tel. no. 7332007) for assistance.

MATHI



# THE LAKE BY THE YEAR 2000



**The year is now 2000 A.D.**

## *Bandar Sunway*



The once upon a time 80-acre quarry hole at the heart of Bandar Sunway is now filled with crystal clear water surrounded by powdery white beaches and whispering palms. The bottom of the lake, rich in colour aquatic life-forms that blends well with the limestone outcrop is a breathtaking sight for adventurous divers. For those who fear the depth of water, one has but to sit on the pier, feet-trailing the water of the lake, and watch the variety of fish snap at pieces of bread tossed in by onlookers. Fish are seen in fluorescent hues of pink, mauve and purple, brilliant blues and yellows and in patterns that are speckled, checked or striped.

On the beach, sand is everywhere. One can see it along the beach in two directions as far as one can look. The beach would be a wonderful place for one to unwind in the evening after a hard days work or to spend a weekend holidaying with the family. This is also an ideal place for those who love jogging on the beach.

For those who dislike water, there is a tropical garden on the eastern side of the lake to relax in or to execute graceful Tai Chi Chuan movements. The air there is fresh and made fragrant by hibiscus blossoms and aromatic herbs. In it, too, are giant trees with massive roots, their crowns straining skywards into the blazing sun, the artfully placed stones and delightful tea house, exquisitely delicate, striped, spotted and mottled orchids in myriad hues from pink to amber and green.

Nights by the lake are filled with colour, music, scenic, beauty and food. The colourful "pasar malam" packed with anything from clothing, food, stamps, souvenirs, novelties and many more items is just the right kind of after - dinner pastime to while away the hours before sleep.

NG BOON HWEE





# BANDAR SUNWAY IDEAS COMPETITION

The competition is on to seek the most innovative development ideas for the central area of the Bandar Sunway. Called an Ideas Competition, it is being sponsored by the SungeiWay Group at a cost of \$300,000.00. With this competition, the SungeiWay Group has created history by being the first private developer to ever sponsor such a unique competition.

The central area of Bandar Sunway consists of 175 acres. The most interesting character of the central area is a depression, with an area of 75 acres and 150 feet in depth, which was created by open-cast quarry operations in the past.

Developments planned for the central area comprise of, inter alia, the SungeiWay Group Corporate HQ, the permanent campus of Sunway College, a drive-in hyper market, lake club, commercial and business centre, and last, but not least, an international standard tourist-cum-recreational resort along the concept of the Sea World of Australia.

Owing to its natural landscape and topography coupled with the strategic location, this central area of Bandar Sunway has a vast potential of being developed into a tourist-cum-recreational resort. Taking the cue from the Government's call to the private sector to help to promote tourism in this country, the SungeiWay Group takes great pride in contributing to the growth of this multi-billion industry.



The official launching of the Bandar Sunway Ideas Competition

The ideas competition was officially launched on December 9 1987 at the premises of Institute of Architects, Malaysia (PAM).

The competition has generated great interest among Malaysia architects, who feel that the central area of Bandar Sunway poses a very strong challenge to their profession.

The competition, which will close on March 15 1988, will be judged by a panel of five assessors:

Mr Jeffery Cheah - Group Managing Director of the SungeiWay Group

Mr Philip Cox - Principal, Philip Cox & Partners Pte Ltd, Melbourne, Australia

Puan Latifah - Director, Department of the Town & Country Planning, Selangor Darul Ehsan  
Hj Mohd Yatim  
Mr David Teh - President, Malaysian Institute of Architects  
Tuan Haji Esa Mohamed - Principal, Akitek Jururancang (M) Sdn. Bhd.

A total of three prizes each worth M\$80,000.00 will be awarded to the architects whose design proposals are judged to be worthy. In addition, honoraria of M\$4,000.00 each will be given to five architects whose design proposals are judged worthy of special mention.

NGIAN SIEW SIONG

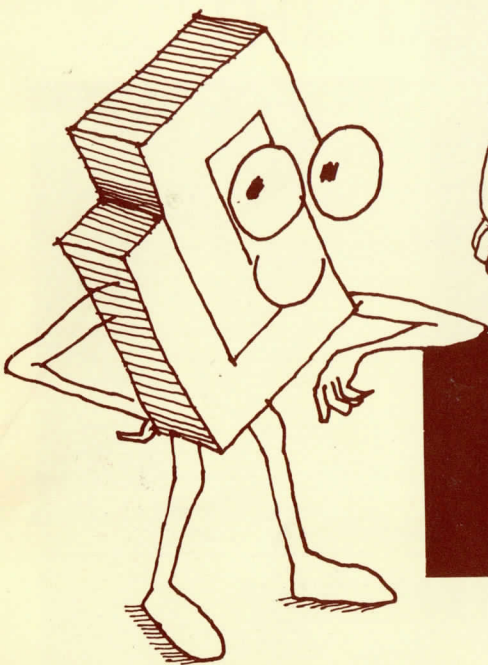


Admiring looks from our guests.



At the Launch.





## TO SERVE YOUR INSURANCE NEEDS BETTER

The insurance division of Sungei Way, Sungei Way Risk Management Sdn Bhd in collaboration with Arab-Malaysian Assurance Berhad launched an exclusive Mortgage Reducing Term Assurance (MRTA) programme called the SUNWAY EAGLE MORTGAGE SCHEME, especially tailor-made for property purchasers of Bandar Sunway.

MRTA is effectively a life insurance policy which provides security to financial institutions for the entire duration of the loan repayment period. The initial amount of insurance is normally the loan amount and, as the name implies, this amount will reduce in accordance with the instalment payments.

MRTA will pay off the mortgage in the event of death or total permanent disability of the person insured due to natural and accidental causes. With MRTA, the family will not be burdened by monthly mortgage payments, or worse, face the problem of selling the house. MRTA ensures that a house will still be in the family's possession in the event of the untimely death or total permanent disability of the person insured.

The Special Benefits offered by the Sunway Eagle Mortgage Scheme are:

### LOW COST INDIVIDUAL POLICIES

Whilst individual policies will be issued, extremely competitive group rates are offered. In this manner, it is guaranteed that the premium cost is the lowest in the entire insurance market.

### ONE PAYMENT

The premium need only be paid once. This single premium payment provides protection for the entire duration of the loan repayment period. Arrangements have been made with the panel of financial institutions to build the premium into the loan if the need arises.

### EASY INSTALMENTS

If financing is not desired and if there are difficulties in paying a single premium, a request for instalment payments, particularly if the single premium exceeds \$1,000.00, will be considered.

### INTERIM INSURANCE

At an additional premium, the policy can also be taken up to cover the interim period, which is the time the Sale & Purchase Agreement is signed to the handing over of the property when the first instalment repayment is due.

### NON-CANCELLABLE

As long as the premium is fully paid, the policy will remain in force until the expiry of the loan term and the insurer cannot cancel the policy mid-term for any reason whatsoever.

### SIMPLE MEDICAL EXAMINATION

Depending on the age and amount of loan, a medical examination of the insured may be required. However, in most cases only

satisfactory answers to a few simple health questions are required in the application.

### 24-HOURS WORLDWIDE COVERAGE

Coverage is 24 hours worldwide including during air travel.

### COMPLEMENTS OTHER INSURANCE SCHEME

Pays claims in addition to any other insurance payments.

Though the scheme has been designed exclusively for property purchasers of Bandar Sunway, similar terms can be offered to employees of the Group owning houses elsewhere.

For further information and enquiries, please contact David Lee/Kathy Siew at telephone no. 7578899.

STOP

## AND READ THIS

ARE YOU APPROPRIATELY  
INSURED?

ARE YOU ADEQUATELY INSURED?

ARE YOU CHARGED A REASON-  
ABLE PREMIUM?

ARE YOUR CLAIMS SETTLED  
PROMPTLY?

If you are unsure of the answers to the above or if any of the answers are negative, contact us immediately.

You can be assured of competitive premiums, professional and efficient consultation and services and, most importantly, your claims will be settled expeditiously.

We specialize in all classes of General Insurance. For immediate response and attention, call David Lee/Kathy Siew at tel. no. 7578899, ext. 146/106.

Sungei Way Risk Management Sdn Bhd  
Wisma Sungei Way  
68 Jalan 52/4  
46200 Petaling Jaya  
SELANGOR DARUL-EHSAN





# MANAGEMENT TRAINEE SCHEME

Responding to our Government's call to alleviate the graduate unemployment problem and in line with our commitment to the development of human resources, our Group Managing Director decided to initiate the SWG Management Trainee Scheme. Our advertisement, in early September 1987, attracted about 2,000 applicants having tertiary qualifications (or better) in Accounting, Business Administration, Computer Science, Economics, Engineering, Law and Mathematics. HRD, and, in particular, Josephine, was overwhelmed, both literally and physically, by the response. For the sceptics, it should be clear that the spectre of graduate unemployment, a hitherto unheard of

phenomenon in Malaysia, is real.

HRD processed the original batch of applications to a more manageable 80 persons who were interviewed over a week. Care and consideration were assigned, particularly to the academic qualifications, extra-curricular involvement and racial composition of the short-listed candidates relative to the Group's needs.

35 persons survived the first interview; they were then put through a second interview. This time around, the various subsidiaries/divisions were involved and made their choices of the candidates in conjunction with HRD.

The 11 persons chosen under the Management Trainee Scheme will be assigned to a particular subsidiary/division for one year to gain hands-on training and experience. A reasonable monthly allowance will be paid to each management trainee. If found to possess good leadership and management potential, it is the intention of the Group to offer our management trainees permanent employment with the Group at the end of their training period.

We hope that their one year with us will be challenging and rewarding. Please give our management trainees all the encouragement and support they need and make their induction into the SungeiWay of life a smooth and trouble-free one.

## MANAGEMENT TRAINEES

NAME	COMPANY	DATE OF COMMENCEMENT
1. Woon Chin Keat	Sungei Way Properties Sdn Bhd	14/12/1987
2. Chua Chong Khim	Sunway College	21/12/1987
3. Khairulanuar bin Yunus	Sungei Way Marketing Sdn Bhd	4/1/1988
4. Thalochan Kaur	Sungei Way Computer Services Sdn Bhd	21/12/1987
5. Chua Ngak Keng	Sungei Way Computer Services Sdn Bhd	14/12/1987
6. Sum Chor Mien	Sungei Way Computer Services Sdn Bhd	15/1/1988
7. Lai Chui Lin	Sungei Way Enterprise (1988) Sdn Bhd	4/1/1988
8. Christina Wendy Lee	HRD	4/1/1988
9. Lim Chee Onn	Sun-Mix Concrete Sdn Bhd	11/1/1988
10. Nor Eda bt. Hj. Baharul	Bintutara Sdn Bhd	1/2/1988
11. Chong Yeok Chyuan	Bintutara Sdn Bhd	1/2/1988

## EXECUTIVE BRIEFINGS BY PCMS

In order to familiarise all our executives with the SungeiWay Group's diversified businesses, we have organised a series of presentations by our Profit Centre Managers (PCMs).

The first presentation was held on 26 November 1987 and was given by Mr David Lee, Senior Manager of Perusahaan Indah. He discussed the major classes of insurance, for both corporate as well as individual purposes. The talk was very informative and was well received by all present.

Subsequently, another talk was held on 18 December 1987, this time focussing on Sunway College which was set up in May 1987. Encik Mutalib Ismail, the Director of Sunway College, briefed us on all the courses offered by the College. The

presentation was well delivered and interspersed with touches of humour. The talk ended with a lively question and answer session.

The next presentation will be given by Dr L.J. Fredericks, P.A. to the Group Managing Director. He will highlight the human resource issues of importance to the Group.

We hope that, through these regular presentations, the executives and other staff of the SungeiWay Group will have a good perspective of all aspects of our Group's diversified ventures and be in a good position to promote the Group's image knowledgeably and professionally.

CHEW CHEE KIN

## WIT TO SELL BY

A persistent young salesman was finally admitted to the office of the president, who chided him: "Young man, you should feel flattered that I allowed you to come in here, I turned down five salesmen today."

"I know," replied the young salesman, "I was all five of them."

Impressed by the young salesman's record-breaking sales of home products to housewives, the sales manager asked him, "To what do you owe your extraordinary success with housewives?"

"Simple," the young salesman replied, "when a housewife opens the door, the first thing I ask is 'Miss, is your mother in?'"

A pretty young girl, recently added to an encyclopedia company's door-to-door sales staff, was reporting fantastic sales. Curiosity aroused, her manager asked her what her secret was. "Simple," she replied, "I get the housewife's undivided attention because I always insist on talking to the husband. I speak to him so softly she strains to catch every word."



# THE BEGINNING OF AN EXCITING NEW TOWNSHIP

## *Bandar Sunway*



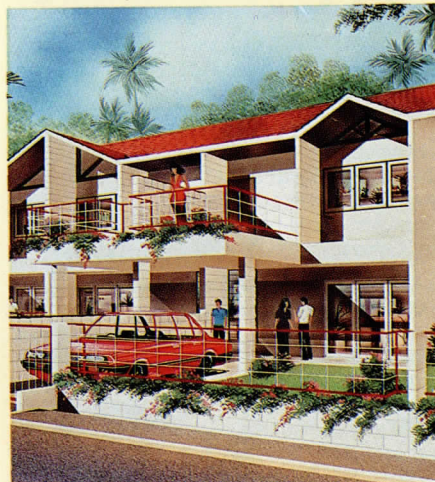
The recent launching of the single-storey terrace houses in Phase 1 received an overwhelming response. All the units were completely sold out. It was certainly a confirmation of our belief that here, in Bandar Sunway, we have a good product that reflects the home-buyers requirements.

These units, pegged at \$60,000/- (the bumiputra discount is 7%), incorporate the best features and finishes that can be offered:

- \* standard lot size of 20' x 65'
- \* covered car porch
- \* extra high ceiling for better ventilation
- \* 3 spacious bedrooms
- \* a special attic for storage purposes
- \* bathroom and toilet thoughtfully separated for convenience
- \* aluminium-framed glass sliding front door
- \* quality finishes include:
  - terrazzo flooring to living/dining area
  - terrazzo flooring to bedrooms
  - coloured sanitary fittings (instead of normal white-coloured fittings)
  - coloured wall tiles in kitchen and bathroom/toilet (instead of normal white-coloured wall tiles)
- \* More extras...
  - block and grille fencing in front

- (instead of chain-link fencing)
- letter-box at front gate pillar

It is often difficult to imagine how these features and finishes will look like upon completion. It is also important that the buyers know what they are purchasing. Towards this end, several showhouses were constructed on the actual site showing a standard house, a corner house and 2 units with upgraded finishes. Many have already



The attractive medium-cost, double storey terrace houses

visited these show houses and are very enthusiastic about the design, the features and quality of the finishes and fittings. And their glowing comments are a reflection that we are delivering what the house-buyers are looking for; this is a fruition of the surveys carried out before the houses were designed.

### **These are some of the comments received:**

- "....it is a good idea to have the bathroom and toilet separated .....so much more convenient."
- "....the attic will take care of all my storage problems."
- "....no, it is not at all expensive for a house in Petaling Jaya."
- "....what a nice surprise, coloured sanitary ware and tiles instead of just plain white"
- "....the house feels spacious and airy."

Encouraged by the success of Phase 1 and the demand, Phase 2A will be made available very soon. In fact, over 2,000 interested buyers have registered for just 202 units. Phase 2A offers standard





One of the showhouses at Bandar Sunway



Front view of the single-storey terrace show house



The spacious living and dining area. in the show house

double-storey terrace houses at only \$75,000/-. The preliminary specifications show a house with equivalent, if not more attractive features, than the single-storey terrace houses.

#### You get:

- \* A double-storey 4-room terrace house
- \* A standard land area of 20' x 65'
- \* A built-up area of about 1,100 sq.ft.

#### You also get so much more extra:

- \* An extra long driveway of 27'
- \* Covered car porch
- \* Extra large master bedroom of 20' x 11.5'
- \* Balcony attached to the master bedroom
- \* Aluminium-framed glass sliding front door

#### Quality finishes include:

- \* terazzo flooring in the living/dining area
- \* parquet flooring in the bedrooms
- \* coloured sanitary fittings in the bathrooms (instead of white coloured fittings)
- \* coloured wall tiles to kitchen and bathrooms (instead of white coloured wall tiles)
- \* 6' x 6' ceramic floor tiles to kitchen and bathrooms (instead of normal mosaic tiles)

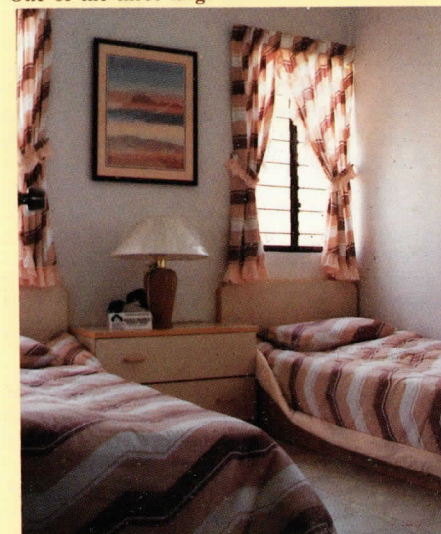
#### More extras....

- \* block and grille fencing in front (instead of chain-link fencing)
- \* letter-box at front gate pillar

In addition to all the features and quality finishes, Bandar Sunway also offers an excellent location, competitive pricing and, through our extensive surveys and research, delivers what the house-buyers require. Bandar Sunway is also not just another run-of-the-mill township but a township developed on a revolutionary and bold concept. Besides the residential development, the central area will consist of a commercial town centre, The Sungei Way Corporate Headquarters, the 20-acre permanent campus of Sunway College, and the development of international-standard recreational facilities aimed at attracting local and foreign tourists.

In its quest to elicit the most innovative development plan for the central area, Bandar Sunway Sdn Bhd is leaving no stone unturned. It initiated the "Bandar Sunway Ideas Competition" - an architectural competition, to do just that. It is

expected that the central area, which is the focal attraction of the township, will be transformed into a "mini-world extraordinaire" - certainly a resort living environment that any home-owner at Bandar Sunway can be proud of. More than the aesthetic point of view, we are providing the impetus to ensure the property appreciation potential and the growth of the township. In the long-run, every home-owner will benefit from the inflow of local

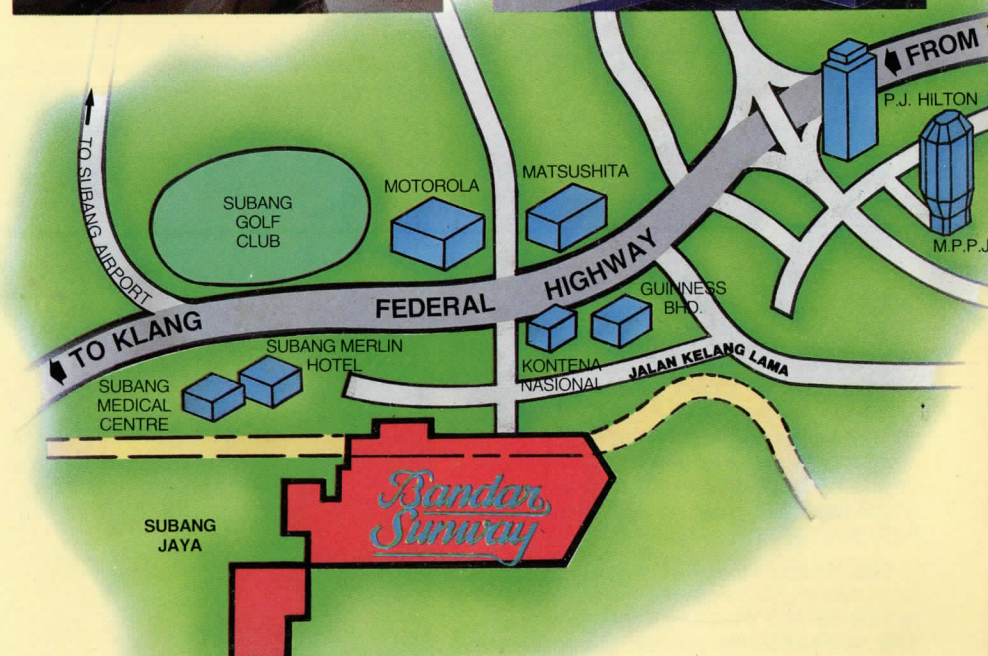


One of the three large bedrooms

and foreign tourists. The Sunway College permanent campus with a capacity of 5,000 students will also contribute to the growth and value of the township.

#### SHARON WOO

#### The coloured wall and floor tiles in the kitchen







# SUNWAY COLLEGE EDUCATIONAL FAIR

## PENANG

This fair was held at the Dewan Sri Pinang on the 12th and 13th December 1987. In all, more than 20 participants drawn from institutions of higher learning took part.

It was opened by Encik Mohd Saffian bin Mohd Nazin, the District Education Officer, on the 12th Saturday. The opening ceremony was declared open at 11.00 a.m.

In his speech, Encik Mohd Saffian stressed that academic and professional education through private institutions was part and parcel of Malaysia's development and complemented the role of the country's universities. These private institutions have a vital role to play as the universities cannot absorb all the candidates wanting a tertiary education. Moreover, by opening the doors to instruction based on curricula from overseas, these institutions help to enrich the quality and inject variety into the character of the pool of trained personnel from which the country can draw on. It was also pointed out that the country has saved a tremendous amount of money through courses being taken wholly or partially in Malaysia.

The response from the public was good. In the first hour, many members of the public visited the Sunway College booth. This resulted in our prospectus disappearing at an alarming rate. "Alarming" because only a limited number could be taken to Penang (and despite this limit being strictly followed, an excess luggage charge had to be paid even though it was a domestic flight - the reason given was that the box was too much in excess of the weight allowed!) so a different tactic was used to satisfy enquirers at the Sunway College booth - they were given explanations of the courses available and then requested to fill in the mailing card so that a follow-up could be made from Sunway College in P.J. when details could be sent to them. All in all, a thick pile of these cards were brought back to P.J. A particularly useful group to target (and they have been put on the permanent mailing list) is the Careers Guidance Counsellors from schools. All available literature were given away and any new information on the latest courses will also be posted to them.

It was clear that the visitors were made up of various groups of people. They were mainly students, but most of them were accompanied by parents. The students were generally those who had just sat for the

SPM/STPM although a number were from Form Four. Teachers, especially those who were Careers Guidance Counsellors were equally interested.

The interest on courses covered a wide spectrum, much of which the courses offered at Sunway College could address. However, there was a group of enquirers who were interested in 'A' Levels. These people would be a suitable target group for the Tertiary Entrance Exam starting in February 1988, especially if they can be given an assurance that the T.E.E., besides being an entry qualification for Australian universities, is also acceptable to universities in the U.K.

Although the time of closing of the fair for both days was 6.00 p.m., the organisers decided to extend the exhibition by two hours on Saturday, to take advantage of a school concert that was being staged that evening for parents. A large crowd was expected and it was thought that they would stop at the booths on their way into the Auditorium. The turnout, was however, smaller than anticipated.

It was useful for Sunway College to have taken part in this Educational Fair as many visitors said that they had not known about

the College before. During the fair, contact was made not only with the public in Penang, but also with that in Kedah, especially around the Bukit Mertajam area. Personnel in the College have started the process of follow-up contact through the mailing of handbooks and the fee structures to interested students and parents.

LENA GOH

## JOHORE

The College participated in the Johore Education Fair which was held on the 8th and 9th of December, 1987 in Maktab Sultan Abu Bakar (English College) Johore Baru.

About thirty private colleges and institutions took part in the two-day education fair.

It was officiated by Encik Mohammad Wahid Abdul Rahman, a representative from the Department of Education in Johore.

The response was lukewarm, with an estimated 1,000 students. Those who did attend were, however, genuinely interested in furthering their studies.

The College's head of the Engineering Department, Mr Subramaniam was invited to talk on the twinning concept. It was well received by the parents and students who attended the educational fair.

LOONG SHU-LING

The official opening of the Johore Education Fair



Dealing patiently with an enquirer





# THE ENGINEERING DEPARTMENT, SUNWAY COLLEGE

## INTRODUCTION

The Engineering Department was the first department to be set up at Sunway College and the Foundation Engineering Course took off on the 6th of July 1987. At present, the department consists of three full-time lecturers and one laboratory assistant. As part of the expansion programme due to start in 1988, the department will boast about 10 lecturers, 2 laboratory assistants and 2 laboratory technicians. The department also has two up-to-date laboratories with the related facilities. One of them is used for Chemistry experiments while the other is shared between the Electrical and Mechanical Science experiments. With the introduction of the First Year Leicester University Engineering Programme in 1988, there will be a need for more laboratories at the proposed Bandar Sunway campus equipped with the necessary facilities for the first year engineering experiments..

At present, only the one-year Foundation Year Engineering Course is being offered. This foundation year course is offered to students who have completed their SPM or 'O' Level examinations and obtained excellent results, and who have the intention of obtaining a degree in engineering. This course is a necessary requirement for these students who wish to enter the First Year Leicester University Engineering Programme which will be conducted at the Sunway College. After their first year at Sunway College, the successful students will be able to go to Leicester University to complete the second and third years of the course.

## THE FOUNDATION YEAR ENGINEERING COURSE

To be awarded the degree in engineering from the University of Leicester, a student must first complete the one-year Foundation Engineering course and the first year of the 3 year degree course. After completion, the student will then complete the 3 year degree course, at the University of Leicester. Students admitted to the Foundation Engineering course are guaranteed a place in the engineering degree programme of Leicester University provided that the foundation course is completed satisfactorily. Thus, the foundation year comprises those branches of the physical sciences and mathematics needed for progression to the first year which in turn comprises of the following:-

- (a) Communication and study skills taught throughout the year.
- (b) Academic programmes in the following subjects including laboratory and

computing tasks where appropriate:

- i) Chemistry
  - ii) Mathematics
  - iii) Mechanical Science
  - iv) Electrical and Electronic Science
  - v) Engineering Drawing
  - vi) Computing
- (c) Projects in the engineering applications of some or all of the above subjects during the last term of the course.

The syllabus of the subjects given above have been planned mainly to:

- i) encourage the recognition of the operation of concepts and principles of the sciences to engineering applications.
- ii) provide a firm foundation for the further study of engineering.
- iii) foster an appreciation and knowledge of the concepts which link the sciences and mathematics.
- iv) develop manipulative and observational skills and use these to analyse and evaluate information arising from facts, concepts and principles.
- v) enable students to perform experiments and develop their skills in laboratory procedures and techniques.

## THE FOUNDATION COURSE ASSESSMENT

The Foundation Year Engineering Course assessment falls into two main categories. One is based on the final examinations while the other is based on coursework; both weigh equally in their contribution.

### (a) EXAMINATIONS

Students are examined in four subjects.

There are as follows:

- i) Chemistry
- ii) Mathematics
- iii) Mechanical Science
- iv) Electrical and Electronic Science

There is a total of seven examination papers. There is one Chemistry paper, two Mathematics papers, two Electrical and Electronic Science papers and two mechanical Science papers. Science papers.

To proceed to the first year Engineering Course, students have to obtain at least four grade Cs in the four subjects listed above and an overall grade C based on their coursework and examinations.

### (b) COURSEWORK

The coursework in the form of phase tests, laboratory work, projects and engineering drawing in the foundation year forms an important part of the course.





Mr Steven Chee Siak San General Manager, Mortgage And Finance (M) Berhad, Mr R M J Orgill Chief Executive Officer, Malaysia, Hongkong & Shanghai Banking Corp., Mr Cheah Tek Kuang Senior General Manager, Arab-Malaysian Merchant Bank Berhad, YB Dato' Malek Merican Managing Director, Arab-Malaysian Merchant Bank Berhad, Mr Jeffrey Cheah Chief Executive, The SungeiWay Group, YB Dato' Mohd Salleh bin Abdul Majid Director, Bandar Sunway Sdn Bhd, Mr D G Moir, Area General Manager, Standard Chartered Bank, Encik Azlan Zainol Managing Director, Arab-Malaysian Finance Berhad.

14th January 1988 was a momentous occasion for the Group. The Group signed a M\$55 million syndicated facilities agreement for its \$1 billion Bandar Sunway new township in Petaling Jaya. With this successful syndication, the Bandar Sunway project can now proceed at full steam.

The facilities comprise a term loan amounting to M\$20 million, a revolving loan of M\$4 million and end-finance of M\$31 million.

The facilities are provided by five financial institutions namely, Standard Chartered Bank, Hongkong and Shanghai Banking Corporation, Arab-Malaysian Merchant Bank Berhad, Arab-Malaysian Finance Berhad and Mortgage and Finance (M) Berhad. Arab-Malaysian Merchant Bank Berhad is also the manager for the syndication.

Speaking at the loan signing ceremony, our Group Managing Director, Mr Jeffery Cheah, said that although this facility was the largest ever raised by a subsidiary of the Group, it is only the first of the many facilities required to finance the entire project. When completed, Bandar Sunway will be an integrated township comprising a large residential section, a commercial centre, and industrial park, the Sunway College campus for 5,000 students and a tourist recreational resort of international standard, all centred around a 75-acre clear water lake.

Bandar Sunway will be a 500-acre township with a definite difference. It will be a development never before seen in this country, a model of Resort Living within the City. Towards this end, the Group is sponsoring an architectural competition to obtain the best concepts from among our Malaysian architects. The Institute of Malaysian Architects or PAM is organising this competition.

Despite the soft property market, Mr Cheah believes that there is a sizeable latent demand for good quality houses at affordable prices, judging from the overwhelming response for the two phases of single and double-storey residential units.

Bandar Sunway is poised to be the most exciting township development in Petaling

## THE GROUP SECURES M\$55 MILLION FINANCING PACKAGE FOR BANDAR SUNWAY

Jaya. It is excellently located and for a lower price, offers houses having more feature and with better quality finishes. This we are able to provide because the Group has subsidiaries engaged in construction, engineering and the manufacture of building materials. Hence, without sacrificing quality, substantial savings can be passed to buyers.

To show our commitment to the Bandar Sunway project, the Group's corporate headquarters and the permanent campus of Sunway College will also be located in it.



Mr. Yeow Thit Sang General Manager of property, explaining the concept of the Development



YB Dato' Malek Merican exchanging documents with Mr. Jeffrey Cheah







# KSS TREASURE HUNT/FAMILY DAY CELEBRATIONS 1987



Tug-of-war between the beauties and the beasts!

Months before the Treasure Hunt & Family Day Celebrations, the Kelab Sukan Sunway committee members were contemplating how our family day celebrations would be undertaken. After numerous discussions, we decided that the Family Day would be held in a different venue as a change of atmosphere would make our staff more enthusiastic to participate. The response was overwhelming though much of it came at the last minute. With the KSS Treasure Hunt in conjunction with the Family Day Celebrations, we managed to secure the participation of about 300 people including family members and outsiders to join us at the Pine Resort in Fraser's Hill.

On 17 October 1987, at 1200 hours, the KSS Treasure Hunt 1987 was flagged-off by the KSS President, Mr Chew Chee Kin, on our own Sunway College premises. All the participating cars started off smoothly and by 1230 hours, the last car left. For those not involved in the treasure hunt, they were either anxiously waiting for the bus or finding their way up to Fraser's Hill.

Participants were allotted pre-arranged apartments as they checked in. By then, most of the people were waiting for the first treasure hunt car to arrive. The first car arrived about 1730 hours and was followed by cars arriving at an interval of approximately 2 minutes per car till 1915 hours where the Gap was closed for up-going traffic. At this point in time, the organisers knew that some of the participant's cars did not make it to the Gap in time and they were penalised.

At 1900 hours, most of our people found their way to the dining hall where dinner was to be served, and by 1930 hours, we savoured the first bite of barbecued food. Everything went on smoothly and there was enough food to go around. At 2045 hours, the staff of Sungei Way Properties gave a briefing on the Bandar Sunway project. By then, most of the people were anxiously waiting for the results for the treasure hunt. The winners were as follows:

1. Tan Seng Joo

2. Ng Eng Lee
3. Susie Chong
4. Arnold Kwan
5. Teoh Seang Hin, Suzie Ong, Audrey Har, Angela Tan.

The staff and outsiders were then left on their own. Some were at the tombola session, others enjoyed the cool air, some went drinking or gambled and some returned to their apartments.

The family day event started off with the jogathon on a beautiful Sunday morning. The course itself was a challenge as the terrain was undulating (although it was only 3.9km). Breakfast was served after the event. We proceeded to the field after everyone finished their breakfast. A first ever march pass organised for staff and family members marching in their respective companies began. Colourful flags were waving all over the field injecting spirit to the event. The list of events begin thereafter. The football event generated interest among the participants as it was a new event. The other events had good participation and everything went on smoothly till about 1200 hours when the sky began to darken.

We guessed it was time to pack up as, then, most of the people were hungry and thirsty. After the prolonged tug-of-war which ended at 1300 hours, we proceeded to the resort. Luckily we headed back in time as rain began pouring. Some of the events were cancelled as a result.

Lunch was served by the time we were back at the resort. Prizes were then given out after the lunch. By 1330 hours, most of us were preparing to head back home to catch the Gap going down at 1400 hours.

The trip overall was enjoyable, entertaining but tiring. Thanks to all of you who took part and to the organisers and the management for their encouragement and moral support.

TEOH SEANG HIN



The Sungeiwayans at Frasers Hill



Blow! Blow! Blow!



Ready, Get set, Go!

start of the family day celebrations - a march



Onward to victory!



## RESULTS OF FAMILY DAY CELEBRATIONS

### 1. JOGATHON

- (a) All-comers
  - 1st Luiz Carvalho (SMC)
  - 2nd Fook Sai Kong (SMC)
  - 3rd Chew Cheng Liang (WSW)
- (b) Veterans
  - 1st Loh Thean Loy (SWQI)
  - 2nd Quah Siak Seng (WSW)
  - 3rd Lee Sei Keong
- (c) Women
  - 1st Hoe Luan Imm (SCollege)
  - 2nd Grace Yip (SWCS)
  - 3rd Lim Tiew Ming (SCollege)

### 2. FOOTBALL MATCH

- 1st SWQI & Mines
- 2nd Wisma Sungei Way
- 3rd Sun-Mix, SWConst & SWEnterprise

### 3. 100 METRES (MEN)

- 1st Alvin Tee (SMC)
- 2nd Chew Cheng Liang (WSW)
- 3rd Teoh Seang Hin (WSW)

### 4. 100 METRES (WOMEN)

- 1st Jessie Lee (SWQI)
- 2nd Hoe Luan Imm (SCollege)
- 3rd Thum Poh Yin (WSW)

### 5. TUG-of-WAR

- 1st SWQI & Mines
  - 2nd Wisma Sungei Way
  - 3rd Sun-Mix/Sun-Block/SW Marketing
- Tug-of-War (Ladies vs Veterans)  
Champion - Veterans

### 6. TELEMATCHES

- (a) 'Balancing Act'
  - 1st Wisma Sungei Way
  - 2nd Sun-Mix
  - 3rd SW Quarry Industries
- (b) 'Swing, Swing, Swing'
  - 1st Sun-Mix
  - 2nd SW Quarry Industries
  - 3rd Wisma Sungei Way
- (c) 'Blind-fold Collection Game'
  - 1st SW Quarry Industries
  - 2nd Wisma Sungei Way
  - 3rd SW Construction
- (d) 'Take-off'
  - 1st Wisma Sungei Way
  - 2nd SW Construction
  - 3rd SW Quarry Industries
- (e) 'Balloon Bursting'
  - 1st SW Quarry Industries
  - 2nd Wisma Sungei Way



## SUNGEI WAY'S 3RD TREASURE HUNT ON OCTOBER 17, 1987

It was a bright, sunny Saturday afternoon and every KSS participant was anticipating the fun in store for them. Cars were flagged off by the minute by our KSS President, Mr Chew Chee Kin, who extended his best wishes when our car (No. 25) was at the starting line. Our car consisted of 4 participants; Mason Goh at the wheel, S J Tan as navigator and both Anna and myself were co-navigators. The first question on the list as we headed towards Highway Centre was 'Where there's action'. Action? What action? We (except the driver, of course) started hunting for signs and names and guess what? We came to a unanimous conclusion - must be none other than the United Engineers Malaysia case - a hot topic for debate at that time. The hunt continued and we sure had a trying time both on patience and perseverance. A few questions were like 'a piece of cake' and for other tougher ones, we played guessing games. SJ even got some answers before we even reached the designated spot for the particular question! (one up for you, SJ!). As we were pondering over the last 20 or so questions, we suddenly realised time was what we were short of. We had to reach the 'Gap' before the gate closed and, SJ being a more experienced driver, took over the wheel and we were in for a gruelling, winding half-hour ride as SJ screeched round the sharp bends. Believe me, when the going gets tough, the tough get going!. This saying struck my mind when I started feeling some nausea and after a few 'rock and rolls', I felt the liquid level in my throat starting to rise - I was going to throw up! I quickly grabbed a plastic bag (the rest is up to your imagination). The next thing I knew, a gush of fresh cool air hit my face - the windows were down and Anna handed me some



The winners of the treasure hunt - The Solid Gold Team

'foong yeow' medicated oil. SJ apologized, "I had to do what I had to do, Bet. We have to accomplish our 'mission', you know!". I replied, "Go ahead, SJ, do what you have to do, don't worry a bit. We came here to win and we must do our best". Finally, (I mean, finally!) we reached the 'Gap' to everybody's relief. We had 5 minutes before the gates closed. After the 'race for time' we 'cruised' our way to Frasers.

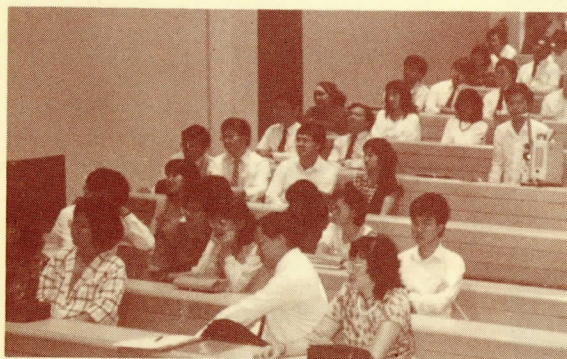
Upon arrival at the Hill Resort, we were given our respective room keys. Boy, I couldn't wait for a nice warm shower!. After the short relaxation period in my room, I adjourned to the Resort's main building for dinner.

In the hall, a sea of hungry Sungei Wayans were busily chatting away,

probably exchanging views and comparing their answers from the Hunt. After dinner came the big moment everyone was waiting for - the announcement of results and prize giving by Mrs Susan Cheah. I was stretching my neck to look as there was already a big crowd standing at the front of the hall. I faintly heard the name 'Solid Gold' (our team name) being mentioned and, before I could be reassured, I saw Mason and S J Tan getting up from their seats, their faces shining with triumph and started walking towards the prizes counter. True enough, we were the champs!. 'So, we've done it!' exclaimed SJ as we stood together for the team photo. The prize comprised 2 return air tickets to Singapore, 2 Dunlopillos and 4 mini shields.

BETTY LIM

## TRAINING FILMS



Ten rapt SWG staff at the screening of one of our training films

The process of manpower training never ceases particularly for the SWG. In expanding the range of training methods for our employees, HRD began screening short training films depicting some particular theme related to the management of business and people.

The following films have been screened to-date in the Auditorium of Sunway College:

1. Open the Door
2. Ripples



3. Teams and Leaders
4. In Search of Excellence

MODERATOR	DATE
L J Fredericks	14/9/1987
Chew Chee Kin	29/10/1987
Susan Cheah	9/12/1987
Su Thai Ping	19/12/1987

HRD has been greatly assisted by our moderators who, at the end of the film, normally give their encapsulated view of the particular film shown to the audience.

The moderators have or are expected to employ various strategies to encourage the audience to react in any way to the film, its relevance and its message. Our staff have been a little shy and cautious at these sessions; in particular, the ladies have been quite reluctant to air their views.

Do attend our film sessions and do not be embarrassed about voicing your comments. If you have suggestions about what you would like to see in future (within the area of management, of course), do contact HRD.





The built-in bar; for those who like to unwind the day with a drink or two.



The lounge area of the Clubhouse - a relaxed retreat

# KELAB SUKAN SUNWAY CLUBHOUSE

For a relaxed atmosphere, a homemaker's best bet would be on a selection of soothing pastels. A homey touch can be created by striking a harmony of colours in pink, blue, grey, etc., but yet maintaining a cosy overall impression that does not border on being ordinary.

When I first pondered the decorating theme and concept for the Kelab Sukan Sunway Clubhouse, my first priority was to ensure that the Clubhouse would be a relaxed retreat for staff and not at all like some clubhouses which are inclined to be commercial. I decided to adopt a very soothing environment and a post-modern concept with the application of pastel colours.

The lounge area which is predominantly grey, is complemented by pink columns and white fibre-plaster ceiling, wall-coverings and contemporary prints. Deliberately kept spacious without clutter and a built-in bar, the lounge area which opens to the patio, is done up to house a sizeable partying crowd.

There is also a spacious billiard hall and a squash court which doubles as a gym for aerobic classes.

The kitchen boasts sharp colour contrasts of bold red and black to create a cheery mood.

For the bedrooms on the first floor, a hotel room concept is used in terms of furnishings as these rooms are designed mainly for short stays. However, pastels still prevail here for a comfortable at-home feeling.

Rooms at the Clubhouse are also available for rent. The rates are as follows:-

Rental per room/night	- \$ 40.00
Master-bedroom per night	- \$ 60.00
Rental of premises for dinner parties below 50 persons	- \$ 50.00
Rental of premises for dinner parties above 50 persons	- \$100.00

NELSON YONG



Our well-equipped and modern kitchen

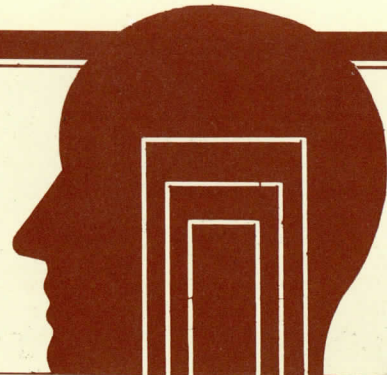


The soothing environment created by the pastel tones of the lounge.



The master bedroom





*From the desk  
of (HRD)*

In order to better programme staff training and development in the SW Group, HRD is gradually attempting to establish contacts with various training organizations locally and abroad. One such organization is the Singapore Training and Development Association (STADA) which is committed to the effective acquisition and application of knowledge and skills in all areas of HRD.

I recently attended the STADA monthly training lecture in Singapore given by Bill Veltrop, an ex-Exxon employee who specializes in large systems development and their re-design and renewal. Bill Veltrop introduced the 4-Box Organization Systems Model to describe the dynamics of an organization.

(c) **Environment need satisfaction** (productive and mutually advantageous relations with suppliers, customers, shareholders and reputation in the community).

(d) **Organization competence** (ability to identify and react to environmental changes).

## II. ORGANIZATION CULTURE

The culture of an organization has a distinct influence upon the results that an organization generates. Organizational culture pertains to the 'personality' and behaviour of an organization and is the sum of many parts. It should be clear that the style and approach of the organizational leaders will be one important compo-

## III. ORGANIZATION DESIGN

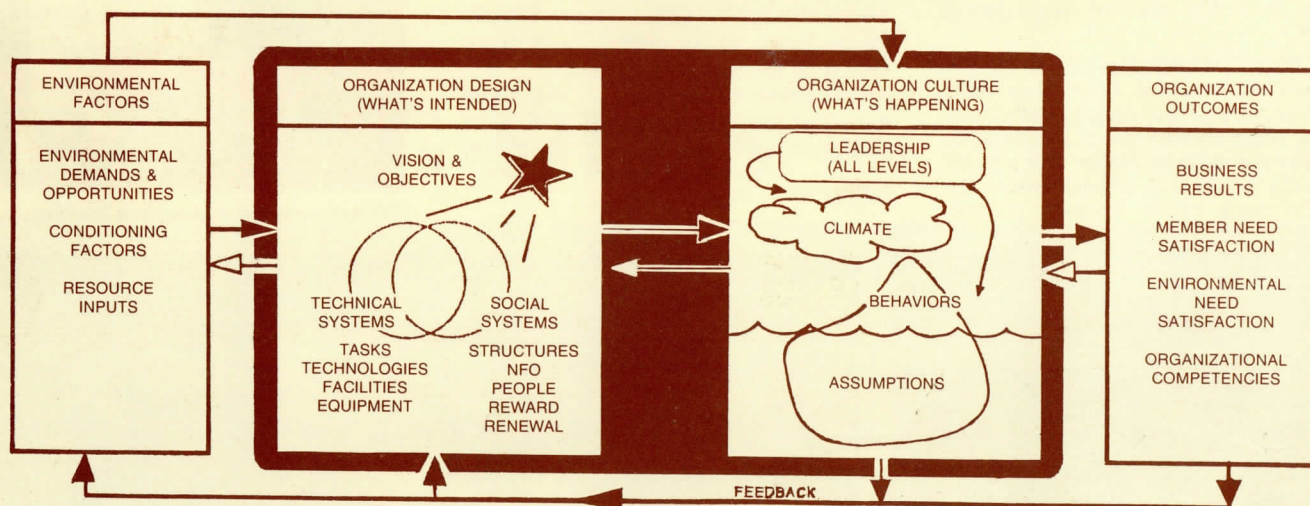
The design of an organization relates to its structure, systems and processes. An organization must have goals or, better still, a vision. It contains technical systems, information and decision-making systems, and HRD systems, reward systems and work systems.

## IV. ENVIRONMENTAL FACTORS

The fourth box incorporates the environment within which an organization operates and inter-relates with. Three areas of relationships bear upon the organization, its designs, culture and outcomes.

- **Environmental demands and opportunities** (how positively the

### 4-BOX ORGANIZATION SYSTEMS MODEL



The 4 major elements in designing an organization are as follows:

## I ORGANIZATION OUTCOMES (OR RESULTS)

- Business results** (profits and profitability, improvements in productivity, establishing a reputation for product and service quality in the market).
- Member need satisfaction** (employee and industrial relations, motivated and loyal staff, low absenteeism and turnover of staff).

nent of corporate culture; vision of the leadership and its ability to imbue the members of an organization with it and achieve it are important characteristics which affect organizational outcomes directly and through the human resources belonging to an organization. The culture of an organization relates to the behaviour, attitudes and orientations of the human resources and determine whether an organization is innovative and successful or not.

organization reacts to and benefits from its environment and changes within it).

- **Conditioning factors** (how well the local culture is understood by the organization and the extent to which it can draw profitably from its own experiences).
- **Resource inputs** (utilization of resources available within the environment by the organization).

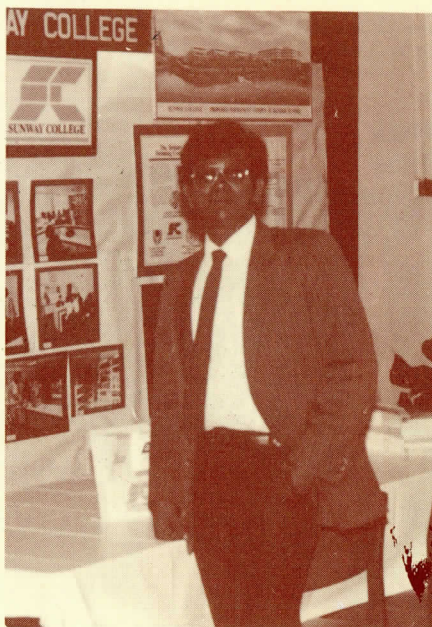


# SUBRA'S SYMPOSIUM SUBMISSION

Mr Subramaniam P D R Nathan (also known as Subra by the colleagues), the head of the Engineering Department of Sunway College, presented a research paper at a symposium held in the Georgia Institute of Technology in Atlanta, Georgia between 25 - 27 August 1987.

The symposium on electromagnetic compatibility, was jointly organised by the Institute of Electrical and Electronic Engineers (IEEE) and the Georgia Institute of Technology.

Investigation of lightning stepped leaders due to tropical thunderstorms were carried out in Malaysia by Subra over a three year period from 1983 to 1986. Subra braved the lightning, thunder and rain (sometimes with an empty stomach) to



Subramaniam of the Engineering Department, Sunway College.

carry out extensive theoretical work and electric field monitoring, to test the experimental validity of two of the well known charge distribution models, namely the uniform and linear charge distribution. His results showed that the most likely charge distribution would be a hybrid between the uniform charge density and the linear charge density model.

When asked why he conducted such a study, he answered that with sufficient knowledge on the charge distribution, one can devise a more realistic model of the lightning discharge for the purpose of protecting buildings, equipment and people.

To know more about lightning which is a common phenomenon in our country, Subra will be giving a talk on this topic in 1988 at Sunway College.

Subra would like to acknowledge ESSO and the University of Malaya for their assistance during his years of research and also Sunway College for giving him the opportunity to present his research paper at the above mentioned symposium.

LOONG SHU-LING

# SUNWAY COLLEGE LIBRARY

Less than two months before the commencement of the Engineering course, hardly three months before the Western Michigan University and the Curtin University degree programmes began, and with two other courses beginning in early October 1987, the task of setting up a library from virtually nothing was not an enviable one. Nevertheless, after seven months of sheer hard work, the library is eventually set on a firm footing. What seemed impossible has become a reality.

With the number of students increasing rapidly, as well as the introduction of five new courses this year, the expansion of the library seems to be of utmost necessity. As a matter of fact, the classrooms directly above the library have now being converted into a study area for the library. Upon completion, the library will be able to cater to the needs of the ever expanding student population.

Since the library was established in May 1987, much progress has been made. We have successfully secured a total of 1,350 titles, of which some are available in more than one copy, thus making the total number of volumes fast approaching the figure 3,000. In addition, we are subscribing to 62 local and foreign well-known periodicals. All these are shelved under five different collections, namely; Reference, Open Shelves, Law, Blue Spot and Serials.

The Library Collection will be further enhanced with the arrival of a lot more new titles early in 1988.



Some law students referring to law documents in the library.

## INTERPRETATION OF TEAMWORK

T is for the TRUSTWORTHINESS of a person to gain the respect and support of others. We must project ourselves to be someone whom people can count upon.

E is for the ENTHUSIASM we project to others in the course of participating in team work. We do not want to be dull 'Jacks' or 'Jills'

A is for the common AIM each and every-one must recognize before we know how to participate as team member. A common aim will provide guidance and direction for us to move ahead.

M is the MOTIVATION we need to have

in order to keep on going. Motivation can come from our leaders, our colleagues, as well as from ourselves.

W is for the WIN-WIN attitude that we must possess to remind us of the need to be positive and confident in our approach.

O is to denote our ability to ORGANISE, ie. we must get our concepts and strategies right when organising for team work.

R is ROUNDING-OFF session in which we can summarise an assignment and ensure success.

K is to KEEP UP with the good effort and attitude that entitle us to be called 'A successful, progressive and effective team member'.



The arrival of His Royal Highness, the Sultan of Selangor, accompanied by Tun Hussein Onn and the Menteri Besar of Selangor



The VIPs waiting for the arrival of HRH the Sultan of Selangor



Tun Hussein Onn, the Chairman of Board of Governor of Sunway College, chatting with Mr. Jeffrey Cheah



All smiles on the grand day



The VIPs on the big day



Mr. Jeffrey Cheah giving his inspiring speech at the opening ceremony

# UPAC PERASMIAN

Oleh  
Duli Maha Mulia Sultan  
Salahuddin Aziz Shah Alhaj Ibni  
Almarhum Sultan Hisamuddin  
Shah Alhaj

D.K., D.M.N., S., S. S. S. A., D.K. (Brunei);  
D.K. (Negeri Sembilan), D.K. (Kelantan),  
D.K. (Perlis), D.K. (Johor), D.K. (Kedah),  
D.K. (Negeri Sembilan), D.K. (Perak),  
S.P.D. (Sarawak), D.P. (Sarawak),  
Sultan Di-Pertuan bagi  
Negeri Darul Ehsan  
Shah Takluknya.

Pada  
hari, 25 hb. Julai, 1987

HRH the Sultan of Selangor officially declares open Sunway College flanked by Tun Hussein Onn, our Chairman, Board of Governors of Sunway College, and the Menteri Besar of Selangor



HRH the Sultan of Selangor delivers his speech



The guests at the official opening

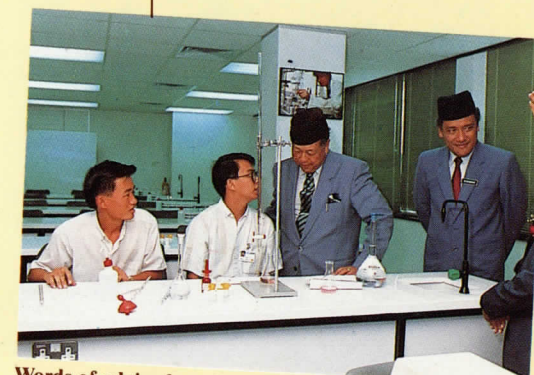


The Menteri Besar of Selangor and Mr. Jeffrey Cheah discussing the bright prospects for the college

The official opening of Sunway College on the 25th July 1987. Sunway College: A Commitment to Academic Excellence.



HRH the Sultan of Selangor admiring the proposed campus of Sunway College.



Words of advice from HRH the Sultan to young students of the College

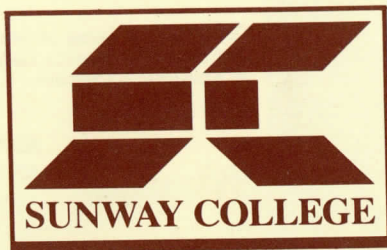


In the library



HRH the Sultan taking a tour, accompanied by the Sunway College Director, Encik Mutalib Ismail





# ORIENTATION WEEK 1987

Pretty ladies vying for the Miss Sunway title



The College orientation committee is responsible for the year-round planning of the programs and comprises representatives of Sunway's students, faculty and administrative staff. The orientation coordinator works with the orientation committee in developing and carrying out the orientation program.

The objective of the Orientation Week is to provide an opportunity for the new students to participate in guided tours of the College and formal and informal meetings with faculty, other staff and their fellow students. The purpose of such meetings is not only to create a comfortable atmosphere, but also to provide information regarding all College matters so that each student has a clearer understanding of the problems, expectations and challenges facing undergraduates in a university environment.

The grandest of all the Orientation events was the 'Orientation Nite' held at the Raintree Club, Ampang. Some of the Raintree highlights are...



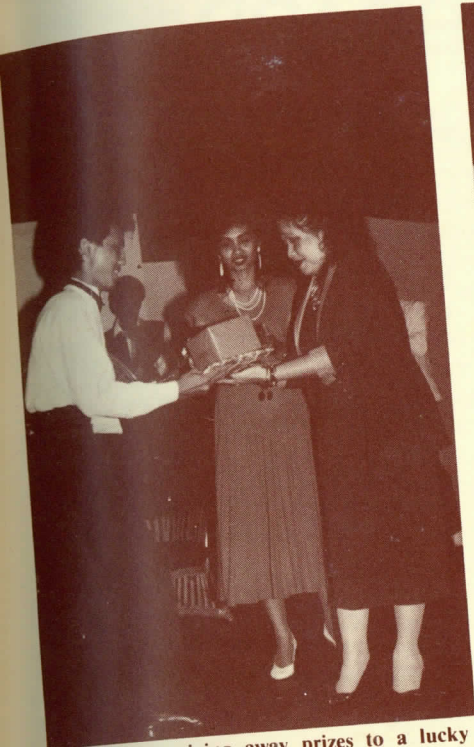
'BEST FEMALE MODEL' 1987



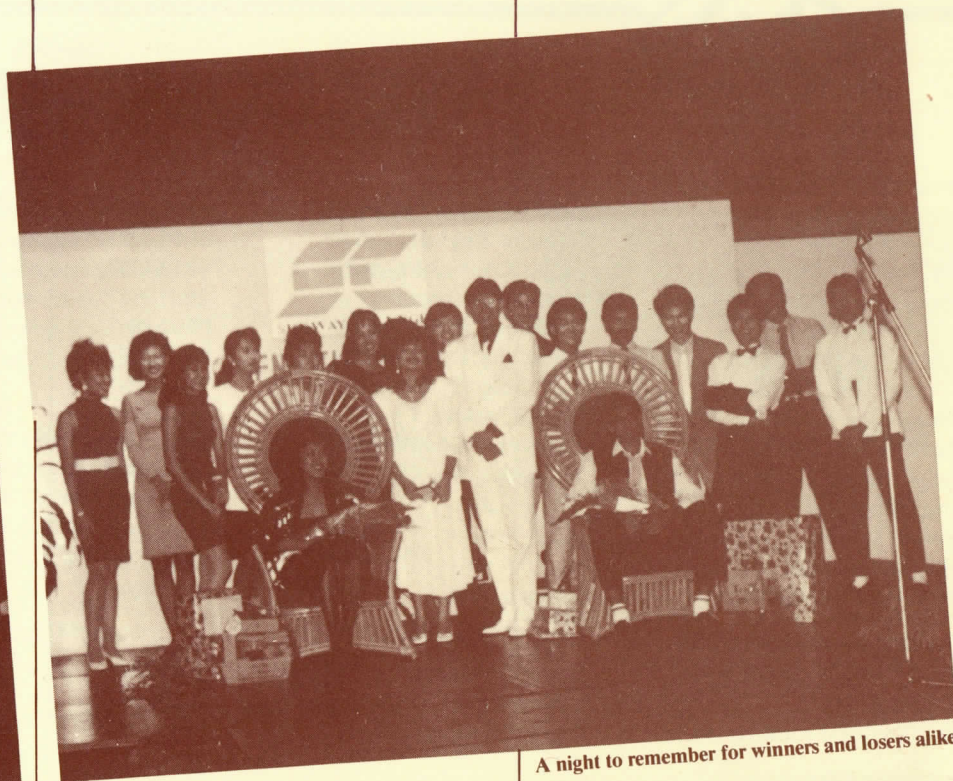
Miss Sunway contestants in traditional Malay costumes







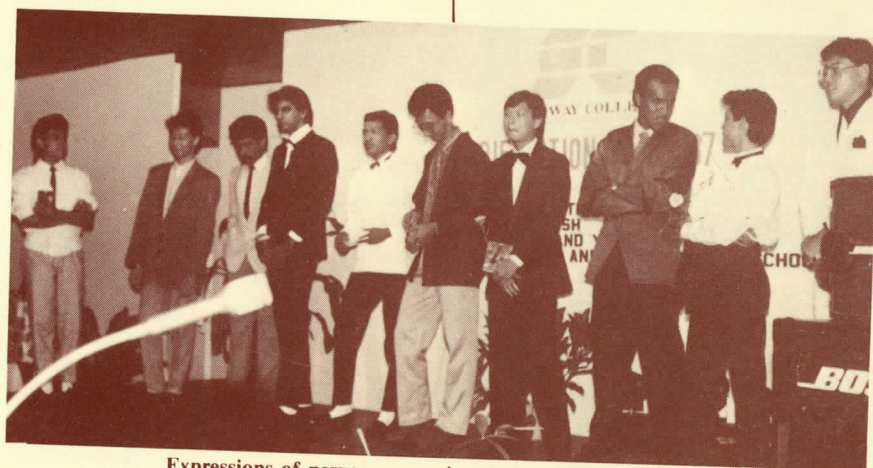
Susan Cheah giving away prizes to a lucky winner



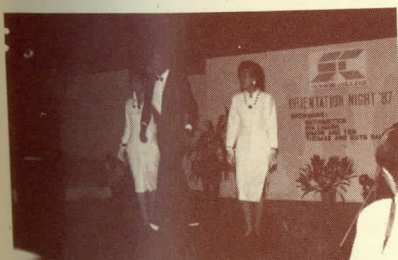
A night to remember for winners and losers alike!



Miss Sunway 1987 - Lakshmi Devi (Leicester University).



Expressions of nervousness prior to the announcement of the winner



Here comes Mr. Sunway: Dalgit Singh (Curtin student)





# WELCOME ABOARD

## Sungei Way Properties Sdn Bhd

Betty Chan Suet Ching	Accounts Executive	16.09.1987
Ng Boon Hwee	Resident Engineer	01-09.1987
Tan Yoke Tor	Credit Control Executive	01.10.1987
Joey Khoo Kai Leong	Marketing Executive	20.11.1987
Sharon Woo Yoot Choo	Marketing Executive	07-12.1987
Lianne Ooi Swee Hoon	Marketing Executive	03.12.1987
Anthony Tan Khai Lock	Asst Quantity Surveyor	01.12.1987
Chung Siew Kheng	Sales & Admin Clerk	01.12.1987
Mohd Rosdizi Kasbi	Temporary Chainman	15.12.1987
Vicky Chiang Lai Mui	Temporary Marketing Asst	08.01.1988
Ong Choon Lai	- do -	04.01.1988
Edward Chong	- do -	11.01.1988
Chen Seong Joon	- do -	02.01.1988
Joyce Wan Kwang Fong	Stenographer	01.10.1987

## Perusahaan Indah Sdn Bhd

David Lee Poh Leong	Senior Manager	01.09.1987
Foo May May	Stenographer	21.09.1987
Carolline D/O Kathirkamuthambi	Clerk/Typist	14.12.1987

## Internal Audit

Ngan Chin Sang	Audit Supervisor	04.01.1988
----------------	------------------	------------

## Sunway College Sdn Bhd

Theva Thas	Maintenance Asst	15.09.1987
Lim Yam Poh	Lecturer	15.09.1987
Hew Su Chan	Lecturer	15.09.1987

## Sungei Way Construction Sdn Bhd

Emily Tay Kewi Wah	Asst Quantity Surveyor	16.09.1987
Chang Cheen Ying	Asst Quantity Surveyor	16.09.1987
Paul Yap Kim Chong	Assistant Site Agent	01.10.1987
Kalidasan S/O Palaraman	Machine Operator	01.09.1987
Hassann B Rukun	Security Guard	19.10.1987
Mohd Azman B Shahidin	Assistant Site Agent	18.01.1988
Lee Hon Leong	Assistant Site Agent	01.12.1987

## Sungei Way Quarry Industries Sdn Bhd

Chan Chuck Yan	Marketing Executive	26.10.1987
Teoh Aik Beng	Accounts Supervisor	07.12.1987
Gan Wah Chin	Credit Control Clerk	03.11.1987
Tee Peow Ban	Counter Sales Clerk	07.12.1987
Linda Boey Mei Ling	Receptionist	30.11.1987
Peh Guat Ee	Receptionist	22.10.1987
P Aseerpatham	Security Guard	19.10.1987

## Sungei Way Enterprise Sdn Bhd

Lok Choo	Mechanic	16.09.1987
Sulaiman @ Salehan	Security Guard	16.10.1987
B Abd Malek		
Mat Ronazri Hj Ahmad	Security Guard	15.10.1987

## Sun-Mix Concrete Sdn Bhd

Yap Yan Nam	Quality Control Engineer	13.10.1987
Haridas K	Field Technician	09.10.1987
Mossess S/O Letchayah	Field Technician	20.10.1987
Fong Ah Choy	Sales Representative	01.10.1987
Khor Lean Joo	Truck Driver/Maintenance Assistant	15.09.1987
Tan Seng Heng	Truck Mixer Driver	12.11.1987
Tan Teng Choon	Field Technician	21.12.1987

## Sun-Block Sdn Bhd

Ong Hock Lai	Sales/Contract Engineer (Pavers)	19.09.1987
Lee Yeow Cheong	Sales Executive	16.12.1987
Fan Yow Fah	Delivery Clerk	12.12.1987

## PAGE 28



## LECTURE, TUTORIAL ROOMS AND AUDITORIUM

There are 28 lecture and tutorial rooms of varying sizes. Audio-visual aids are used during lectures. The College also has a multi-purpose 150-seat auditorium which functions as a large lecture and examination hall. The auditorium is also available to students to stage shows and concerts as part of their extra-curricular activities.

## COMPUTER LABORATORIES

Most of the degree courses offered at Sunway College include periods of computer work. The most modern computers, in especially designed computer laboratories, are made available to students during and after lecture hours.

## SCIENCE LABORATORIES

Students are provided with two sophisticated and comprehensively equipped science laboratories. Safety standards of the highest level are strictly adhered to.

## RECREATIONAL FACILITIES

Sunway College students are encouraged to use the recreational facilities in the College gymnasium, students' concourse and cafeteria.

## LONG-TERM COMMITMENT AND FUTURE PLANS

The Group is fully committed to Sunway College and we are currently developing a 500-acre township, Bandar Sunway, in Petaling Jaya. Out of this, a 20-acre campus, worth approximately \$30 million will be allocated for the development of Sunway College permanent campus. The campus will be enhanced by a huge lake, and will be carefully and aesthetically landscaped. The campus is designed to have complete residential facilities for Sunway College students and staff.



The kiwi is the same size as a domestic hen but lays an egg eight times as big.



**Sungei Way Marketing Sdn Bhd**

Lee Boon Kwang	Sales Manager	01.01.1988
Wong Kek Loy	Sales Representative	01.01.1988
Lee Sek Theam	Sales Representative	15.01.1988
Wendy Wong Lye Leng	Data Entry/Accounts Clerk	14.09.1987

**Sungei Way Computer Services Sdn Bhd**

Zaini Bte Chembee	Trainee Systems Analyst	02.10.1987
Elayne Loh May Foong	Programmer/Analyst	01.03.1988
Hong Eng Sing	Programmer/Analyst	15.01.1988
Anna Koh Li Suan	General Clerk	01.12.1987
Lorraine Lim Tow Ching	Marketing Executive	01.02.1988
Voon Seng Keong	Marketing Executive	11.01.1988

**Sungei Way Transport Industries Sdn Bhd**

Wong Choong Tim	Truck Driver	11.12.1987
Kwong Wah @ Kong Kok Wah	Tipper Lorry Driver	15.09.1987
Wong Kok Foo	Truck Driver	14.11.1987
Wong Yew Fook	Truck Driver	14.11.1987
S Vijaya	General Clerk	01.02.1988

**Human Resource Division**

Khoo Gaik Bee	Assistant Manager	18.01.1988
---------------	-------------------	------------

**Security Division**

Mohd Nasir B Ahmad	Senior Security Executive	01.12.1987
--------------------	---------------------------	------------

**Sungei Way Corporation**

Au Yong Wah Yip	Site Supervisor	01.10.1987
-----------------	-----------------	------------

**Jayarata Sdn Bhd**

Ibrahim B Mahmud	Security Guard	15.10.1987
------------------	----------------	------------

**Bandar Sunway Sdn Bhd**

Komdrasamy S/O Arumugam	Security Guard	16.10.1987
-------------------------	----------------	------------

**Corporate Affairs**

Cheng Siew Ho	Secretary	18.01.1988
---------------	-----------	------------

## MILESTONES MARRIAGES AND BIRTHS

Married	Date	Company
Gina Chong	15.03.1987	Sungei Way Marketing Sdn Bhd
Koh Sing Chuan	13.02.1987	Sungei Way Marketing Sdn Bhd
Edwin Liew	21.10.1987	Sungei Way Management Sdn Bhd
Ng Hong Keat	21.11.1987	Sungei Way Corporation Sdn Bhd
Ng Koh Peng	18.06.1987	Sun Block Sdn Bhd
Tan Seng Joo	15.11.1987	Sungei Way Construction Sdn Bhd
Roger Yew Boon Kong	13.09.1987	Sungei Way Construction Sdn Bhd
Noraziah Bte Hussin	28.11.1987	Perusahaan Indah Sdn Bhd
Jackie Man	01.05.1987	Sungei Way Leasing Sdn Bhd
How Pak Kong	15.03.1987	Sungei Way Leasing Sdn Bhd
Jessie Ler Chai Gen	13.12.1987	Sungei Way Quarry Ind Sdn Bhd

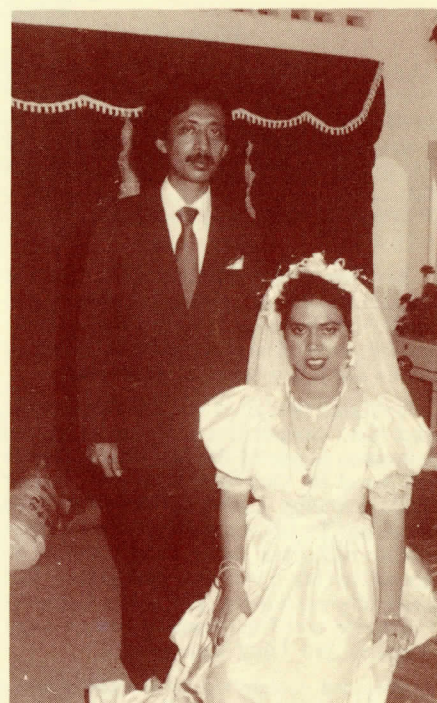
**Births**

Jeannie Lau	11.02.1987	Baby Boy	SW Management
Loong Shu-Ling	13.05.1987	Baby girl	SW College
Vicky Cheong	23.01.1987	Baby girl	Sun-Mix Concrete
Chelsea Cherng	31.08.1987	Baby girl	Sungei Way Leasing
Patricia Khoo	10.12.1987	Baby boy	Sungei Way Managent
Phang Koon Tuck	16.11.1987	Baby girl	Sungei Way Corporation

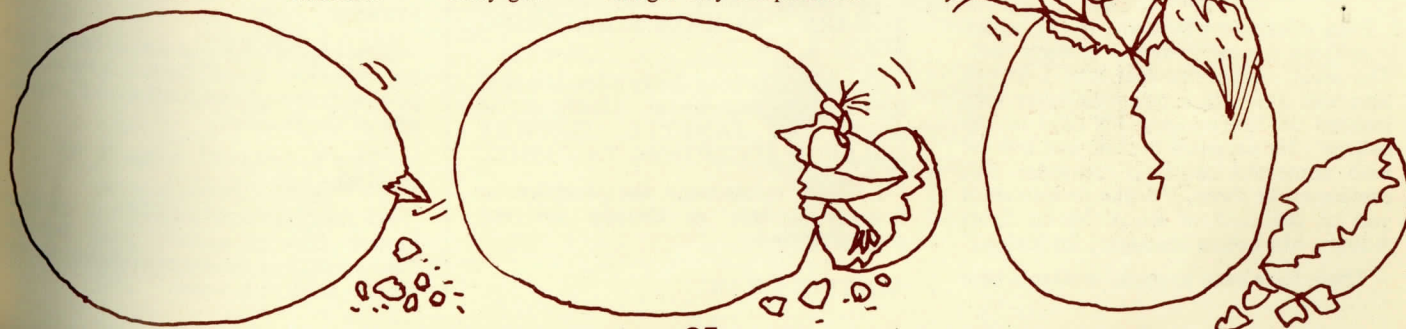
## MARRIAGE OF EDWIN LIEW & VICKKI NG



We finally tied the 'nuptial knot' on Wednesday, 21 October 1987 when we exchanged our marriage vows at the Emmanuel Baptist Church, Petaling Jaya. We spent our honeymoon in Los Angeles, USA. The places that we visited included Disneyland, Knotts Berry Farm (for good wines), Universal Studios, Seaworld in San Diego and also West Coast Plaza reputed to be the largest shopping complex in the U.S.A.



Noraziah Bte Hussin with husband, Jaafar Mohd. Yusof, on their nuptial day





# A DAY IN THE LIFE OF THE SUNWAY COLLEGE RECEPTIONIST



The only sound that can be heard is the 'silent' purring of the air-conditioners, the gentle buzzing of far-away traffic and the occasional tinkling of the telephone. I'd like you to follow me into the mysterious life ..... of a .....  
**RECEPTIONIST AT SUNWAY COLLEGE.**

Keeping a straight face on this job is something of an achievement and can sometimes be more difficult than answering enquiries. The incidents I am about to relate are a few selected incidences.

I am sure that all of you are aware of the fact that Leicester University in the United Kingdom is one of the universities we are affiliated to. Our first Resident Director from Leicester University was Mr Tony Pearson. To my amusement, I received a phone call from an enquirer wishing to speak to Mr Leicester Pearson. I had difficulty explaining that it was Leicester University and Tony Pearson, not Leicester Pearson and Tony University!!

We also screen videos on the respective universities for the prospective students so they can get an idea of the campus overseas. We had a young man who came in to make some enquiries. When asked if he would like to see the video on Leicester University, he stared and said in a huff, 'If I wanted to watch a video, I could do that at home, I have plenty of videos at home'. I must say that before the humour of the situation struck me, I was just as stunned by his answer as he was with my question.

Even salesman who come in can make it difficult for me to keep a straight face. The most memorable salesman I had in here was one with a booming voice who insisted on 'introducing his card to the college'. He persisted in this, and left me with numerous cards to distribute. So, everyone out there, I'd like to introduce you to the card of Encik Mohd Sabri Anan, Marketing Manager, Sri Kalong.

There have been so many incidents here

in the College that it would be extremely difficult to list all of them down. But here, in the reception, the most amusing incidents happen. My daily dosage of laughter comes from people who are ignorant of the fact that with our glass frontage, we on the inside have a clear view of the going-ons outside whilst the people on the outside only see a very clear reflection of themselves. So, we do have a number of people doing their hair, tying their ties, straightening their clothes, to name a few things, quite unaware of the fact, that we in the reception are staring straight at them. We've even had a couple of 'teeth-cleaners', giving us a wide view of their sets of teeth with the occasional bit of chilly in between.

My most hilarious experience was when I had a young man who come in to make some enquiries. I watched him as he approached the door. To my amazement he stood just outside the door, looking up. It took me several moments to realize that he obviously thought that we had an automatic door and was waiting for it to open. I gestured wildly to attract his attention. I wanted to let him know that our door had to be pushed open in order for him to get in. He spent a few more minutes, alternating between looking towards the top of the door, stamping his feet on the rug and shooting very confused glances at me. The final straw for me was when he got in, he turned to look at the door and gave it a look good enough to shatter the glass.

So, potential 'tie-tyers, hair-combers, door-freaks and teeth-cleaners', **BEWARE - JANETTE'S WATCHING YOU.**

So, should anyone desire a few hours of light-hearted experiences, kindly get in touch with **JANETTE, SUNWAY COLLEGE RECEPTION.** Tel: 7555122.

I would recommend the reception at Sunway College as therapy for any depressed soul.

**JANETTE CHAN**



"Senator," asked one of his aides during a working luncheon, 'What do you intend to do about the Abortion Bill?'

"Shhh, not so loud," gulped the legislator. "Phone that quack and tell him I'll pay it first thing next month."

**DAVID LEE**

A great tournament was once held in feudal Japan to select the best samurai swordsman. After exhaustive eliminations, three finalists remained. Each was given a small box with a fly in it.

The first warrior released his fly and with one swift sword movement divided it clearly into 2 halves. The second was even more skillful and sliced his fly into quarters with two lightning-like strokes of his keen blade. The third finalist released his fly, swung his sword and had it back in the shield in a split of a second, but the fly kept on flying. "Ah", said the judge, "Your fly has escaped unharmed"

"He still flies", countered the proud warrior, "but he will no longer reproduce".

**DAVID LEE**

**MOK** : How does the recent stock market crash affect you?

**JEANNIE** : Terribly! It's been giving me nightmares. I can't sleep.

**MOK** : What about you, Chris?

**CHRIS** : I sleep like a baby.

**MOK & JEANNIE** : Lucky devil! How do you manage that?

**CHRIS** : Lucky? I wake up every few hours to cry before I'm tired enough to go to sleep again!

**GIA**

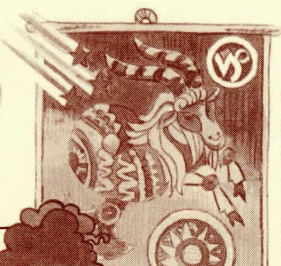
The Honorary President of the Suyawai Neurotic Centre was making his annual visit to the Centre. "Have all of you been behaving well?" the President asked the first group of inmates he saw at the entrance.

"Yes! In fact the Boss was so happy with our behaviour that he built us a swimming pool with diving boards all round" replied one of the inmates.

"That's fantastic! Keep it up" the President complimented.

As the President walked on, another inmate shouted happily from behind, "Boss said if we behave even better, he will fill the pool with water."





### The Capricorn Secretary

(December 23 – January 22)

Almost the perfect secretary, she is reliable and does not balk at heavy workloads. Make a friend of her and she'll be

loyal to you.



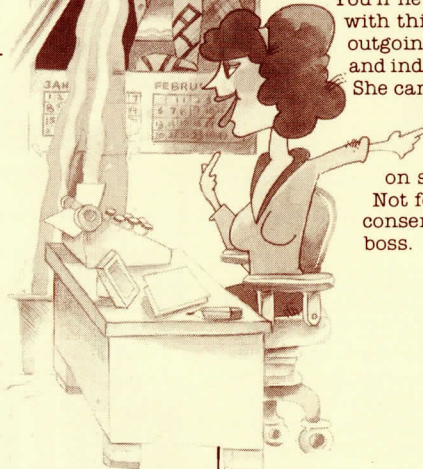
### The Aquarius Secretary

(January 23 – February 22)

You'll never be bored with this lady as she's outgoing and sociable, and individualistic.

She can be rather aggressive once she's set her mind on something.

Not for the conservative boss.



What the stars say about your secretary .....



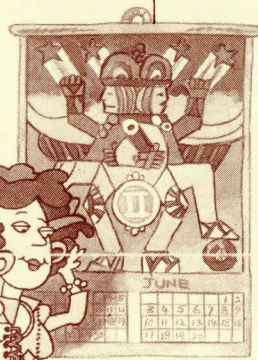
### The Taurus Secretary

(April 23 – May 22)

Run for cover when this lady explodes! But take heart, she's usually quite slow to anger. She's pleasant too. If you win her respect, she'll stick by you through hell or high water.

her respect, she'll

stick by you through hell or high water.



### The Gemini Secretary

(May 23 – June 22)

Your Gemini Secretary will keep you young. She's gregarious, and eternally youthful. A speedy worker, she's always finding short cuts and solutions. Seldom ruffled, she'll smile through the tough times.



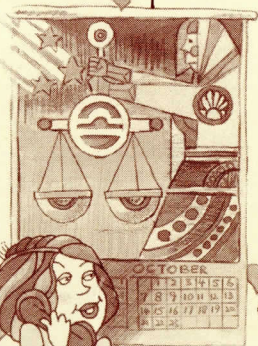
### The Virgo Secretary

(August 23 – September 22)

Neat, methodical and efficient, she's your perfect Secretary. Don't dominate her though, she doesn't like it; but you can

always count on her patient and amiable nature.

WORK PLAN



### The Libra Secretary

(September 23 – October 22)

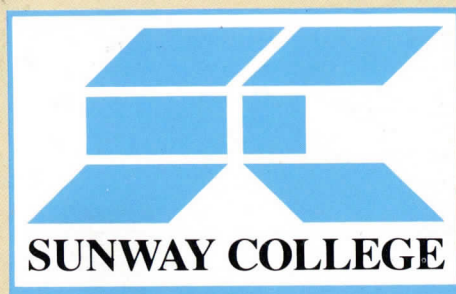
Let her handle your toughest client and he'll be bowled over by her. Tactful and

courteous, her sense of balance and fairness makes her a good mediator.

She's also a romantic at heart.







## INTRODUCTION

SUNWAY COLLEGE was founded by the SungeiWay Group in response to its Group Managing Director, Mr Jeffrey Cheah's commitment and contribution to educational opportunities in Malaysia. The urgent need for more tertiary institutions in Malaysia and the government's encouragement in the setting up of private tertiary institutions were the catalysts in the establishment of Sunway College. Through its twinning degree programmes, Sunway College provides not only Malaysian, but also international students, the opportunity to pursue tertiary education at universities that are internationally recognized and respected for their academic excellence.

"It is the sole belief of the SungeiWay Group that human resources have been recognized as its most valuable asset and the successful growth and diversification is a testimony to this belief. It is our hope that the SungeiWay Group will continue to support and play a dominant role in our nation's growth through industry, commerce, and the academic development of its human resources". (Jeffrey Cheah, The Star, July 1987)

## OBJECTIVES

The primary objective of the College is to provide educational opportunities for Malaysians regardless of race and religion. The SungeiWay Group, being a business organization, sees Sunway College as an economically viable investment. This objective is based on the following observations:

- Too many students going overseas to pursue higher education;
- High cost of overseas education;
- Sluggish economy at home, encouraging parents to look for new alternatives for their children's education;
- Government's expressed interest and support for twinning schemes;
- Conserve foreign exchange;
- The SungeiWay Group has the resources to provide a full range of facilities.

Whilst Sunway College perceives its role as the provider of educational opportunities for Malaysians, it also sees potential in developing its product to meet foreign demand. Sunway College has explored the potential of the foreign student market in countries like Singapore, Thailand, Indonesia, Brunei, Hong Kong, and the Middle East countries. The objectives of the College in venturing into the international arena are two-fold:

- To develop Malaysia into a country that could offer international education on attractive terms.
- The strong belief that courses offered under the twinning scheme have potential to become a oreign-exchange earner.



Focus on Mutalib,  
Director Sunway College.



Sunway College.

## DEGREE PROGRAMMES OFFERED

Through its twinning degree programmes, Sunway College is affiliated with 5 internationally recognized and well-respected overseas universities. Seven courses are currently being offered at the College, namely:

University	Degree Offered
Leicester University United Kingdom	LL.B Bachelor of Arts (Economics) Bachelor of Engineering
Western Michigan University, United States of America	Bachelor of Business Administration Bachelor of Arts (Comm.) Bachelor of Science (Computer)
Curtin University of Technology, Perth, Australia	Bachelor of Business (Accounting) This programme will not be offered to any new students)

New courses for 1988 offered at Sunway College are:

University	Degree Offered
Monash University, Melbourne, Australia	Bachelor of Economics
University of Western Australia, Perth, Australia	Bachelor of Economics Bachelor of Commerce Bachelor of Science (Computer)
Pre-University (Tertiary Entrance Examination)	Other than tertiary level courses, the College also offers a pre-university course, the T.E.E. This is a one year matriculation course offered by the Secondary Education Authority, Western Australia. Upon completion of this programme,

students will be accepted not only by all Australian university, but also by many universities in America, Canada, New Zealand and United Kingdom.

## SUNWAY COLLEGE FACULTY STAFF

"To help maintain the highest degree of academic excellence and to provide students the greatest opportunity to realize their full-potential, the faculty staff at Sunway College are all highly qualified, experienced, talented and dedicated lecturers, both local and foreign. We are fortunate to announce that Sunway College has been able to employ some of the best available lecturers and tutors. The selection process of our academic staff is carried out by a Board comprising members from Sunway College and the affiliated universities. To further ensure that their high standards are maintained at all times, the Universities have assigned full-time representatives to Sunway College". (Encik Mutalib, the Director, The Star, 1987).

## COLLEGE FACILITIES

The facilities of the Sunway College are housed in the college campus which it wholly owns. The main building houses the administration offices, lecture rooms, auditorium, laboratories, and the library (2 floors). The tutorial rooms, students' con-course, cafeteria, and other student recreational facilities are in the building adjacent to the main building.

## COLLEGE LIBRARY

Sunway College boasts the most spacious and comprehensive library set up by a private institution in Malaysia. Recommended reading materials, reference texts, journals and periodicals are made available to students and faculty staff under the supervision of a qualified and experienced librarian, Puan Hamadah.